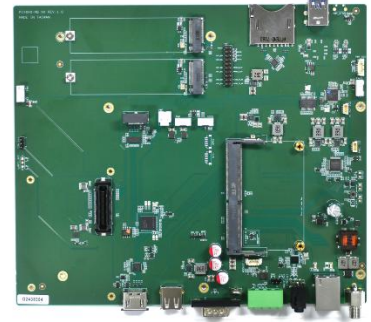


PIX6N0-MB NX

Medical AI Platform

Features

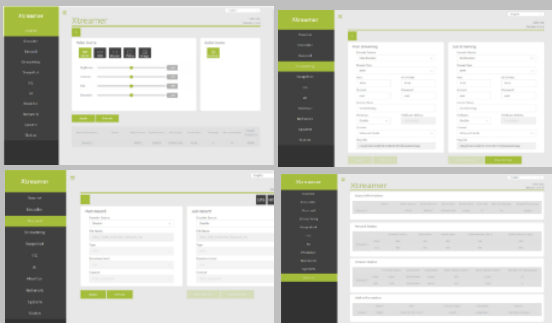
- Powered by NVIDIA® Jetson Orin™ NX Super
- Medical Grade IEC 60601-1
- 2×M.2, Gen 4×2 M Key / Gen 4×1 M Key
- 2×USB3.2 / 1×USB2.0
- UART / GPIO



Specifications

| System | | |
|--------------------------|--|---|
| CPU | NVIDIA Jetson Orin™ NX 8GB Super 6-Core Arm® Cortex®-A78AE v8.2 64-Bit CPU 1.5MB L2 + 4MB L3 | NVIDIA Jetson Orin™ NX 16GB Super 8-Core Arm® Cortex®-A78AE v8.2 64-Bit CPU 2MB L2 + 4MB L3 |
| GPU | 1024-Core NVIDIA Ampere Architecture GPU with 32 Tensor Cores | |
| AI Performance | NVIDIA Jetson Orin™ NX 8GB 117 TOPS | NVIDIA Jetson Orin™ NX 16GB 157 TOPS |
| System Memory | NVIDIA Jetson Orin™ NX 8GB 8GB LPDDR5 | NVIDIA Jetson Orin™ NX 16GB 16GB LPDDR5 |
| Interface | | |
| Storage | Supports External NVMe 1×SD Card Slot | |
| Display Interface | 2×HDMI2.0 | |
| Ethernet | 1×RJ45 for 10/100/1000Mbps Ethernet DHCP Client | |
| Expansion Slot | M.2 1×M.2 2280 M Key PCIe Gen4×2 Slot 1×M.2 2280 M Key PCIe Gen4×1 Slot | |
| USB | 2×USB3.2 Gen2 (Type-A) 1×USB2.0 (Type-A) 1×USB2.0 (PIN) | |
| Audio | 1×3.5mm Line In 1×3.5mm Line Out | |
| Peripheral Communication | D-Sub Connector 1×RS232 1×UART Phoenix Connector 4×GPIO | |
| Misc. Features | Firmware Upgradable | |

Add-On Cards / SDK / Software

| Video Feature | | |
|---------------------|---|--|
| Video Encode | NVIDIA Jetson Orin™ NX 8GB / 16GB AV1 (UHP) 1×4K60 3×4K30 6×1080p60 12×1080p30 H.265 (UHP) 1×4K60 3×4K30 6×1080p60 12×1080p30 H.264 (UHP) 1×4K60 2×4K30 5×1080p60 11×1080p30 | |
| Video Decode | NVIDIA Jetson Orin™ NX 8GB / 16GB AV1 (Main Profile) : 1×8K30 2×4K60 4×4K30 9×1080p60 20×1080p30 H.265 (Main, Main10) : 1×8K30 2×4K60 4×4K30 9×1080p60 18×1080p30 H.264 (Baseline, Main, High) : 1×4K60 2×4K30 5×1080p60 11×1080p30 VP9 (Profile 0, Profile 2) : 1×4K60 3×4K30 7×1080p60 15×1080p30 | |
| SDK | | |
| QCAP | Capture High Performance Renderer Image Snapshot Deinterlace, Alpha Blending Engine Auto Signal Detection 2D/3D Video, Audio and VANC Streams Capture | |
| | Record Encrypt / Sync / Clone / Recording Time-Shifting / Rewind / Pre-Event / Recording Multi-Streams (3D) Recording Animation Transition Effect Video Cropping, Scaling and Alpha Blending Engine | |
| | Stream 2D/3D Universal Stream Client 2D/3D Multi-Streams Stream Server RTSP, RTMP, HLS, SRT, TS, WebRTC. NDI-HX (*), Full NDI (*), Dante AV-H (*) Animation Transition Effect Video Cropping, Scaling and Alpha Blending Engine *Separate License Required | |
| QDEEP | AI SDK Integrated Multiple Algorithms and Deep-Learning Models in Various Fields of Applications Face Recognition Objects Detection Objects Segment Optical Character Recognition License Plate Recognition Customizable Video AI Functions Upon Request | |
| Software (Optional) | | |
| Xtreamer | Web Based User Interface |  |
| | Encode / Decode | |
| | Color Format Adjust | |
| | Record | |
| | Stream / Network | |
| | AV1, H.26X 444 / 422 / 420, 10Bit / 8Bit Select MP4, TS RTSP, RTMP, HLS, SRT, TS, WebRTC. NDI-HX (*), Full NDI (*) Dante AV-H (*) *Separate License Required | |

Environment

| Development Environment | |
|-------------------------|---------------------------------------|
| JetPack | 6.2 or Higher |
| Environment | |
| Power Supply | DC input : 12~36V |
| Power Consumption | TBA |
| Operating Temperature | Standard Version: 0~60°C with Airflow |
| Storage Temperature | -20~80 °C |

Mechanical

- Dimension of main Board: 224.15mm×191.2mm
- Weight: TBA