

SmartVDO Pixel Medical-Grade Touchscreen



SmartVDO Pixel is an AI computing platform designed specifically for medical applications, powered by NVIDIA® Jetson AGX Orin™ or NVIDIA® Jetson Orin™ NX Super for robust computing performance. Pixel features a multi-touch screen that meets IEC 60601-1 medical safety standards and supports high-resolution, crisp images for perfect medical visualization. It also includes expansion slots that support multiple interfaces such as HDMI 2.0, 4×HDMI, 12G-SDI and 12G-SDI QL, making it suitable for various medical environments.

— Feature —



Equipped with Medical-Grade Touchscreen



Diverse I/O Boards Integration



Customized I/O Board Design



Rich AI Pre-Trained Models

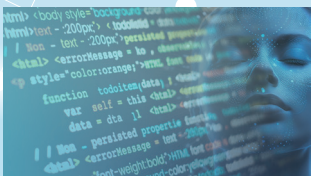


Powerful NexVDO SDK Support



NVIDIA's OEM Partner

— Technology —



Generative AI



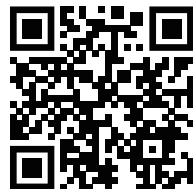
Advanced AV1 4:4:4 Codec Core



NVIDIA® GPUdirect® and GPUdirect RDMA Technology



Exclusive 5G Low-Latency Streaming Technology



SmartVDO Pixel Medical-Grade Touchscreen

SmartVDO Pixel Series

Model Name	Pixel AGX	Pixel NX
NVIDIA® Platform	Jetson AGX Orin™ 64GB / 32GB	Jetson Orin™ NX Super 16GB / 8GB
AI Performance	275 / 200 TOPS	157 / 117 TOPS
Display	10" Screen 1×HDMI2.0	10" Screen 1×HDMI2.0
Video Encode (H.265)	2×4K60 / 1×4K60	1×4K60
Video Decode (H.265)	1×8K30	1×8K30
Capture Interface	1×HDMI2.0 (Support by I/O Daughter Board)	1×HDMI2.0 (Support by I/O Daughter Board)
Expansion Slot	M.2 1×M.2 2280 M Key PCIe Gen4×2 Slot 1×M.2 2280 M Key PCIe Gen4×1 Slot	M.2 1×M.2 2280 M Key PCIe Gen4×2 Slot 1×M.2 2280 M Key PCIe Gen4×1 Slot

— Broad Product Line —

web: www.yuan.com.tw
e-mail: sales@yuan.com.tw



Pixel AGX
NVIDIA Jetson AGX Orin™
64GB / 32GB
275 / 200 TOPS



Pixel NX
NVIDIA Jetson Orin™ NX Super
16GB / 8GB
157 / 117 TOPS

— We Can —



Capture Card

HDMI/SDI/GMSL / VGA / TV



Camera

USB / GigE / MIPI



Multi-Link

4G / 5G / WiFi / PoE / Gyro



SDK Service

NexVDO SDK



BSP Service



OEM / ODM

