



AI Precision for ProAV and Live Broadcasts

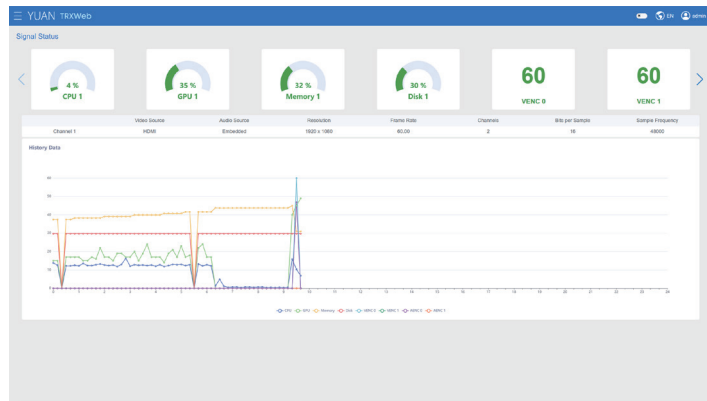
Discover the AIR6N0-C NX TRX

 **NVIDIA® Jetson Orin™ NX Super**

The AIR6N0-C NX TRX, powered by NVIDIA® Jetson Orin™ NX Super, is purpose-built for AI-driven Broadcasting and ProAV applications. With a hardware design featuring Telly and I/O boards, low-latency streaming, and real-time processing, it excels in live broadcasting and advanced content creation. The included control software enhances monitoring and management, ensuring efficient, precise, and AI-optimized workflows.

Features

- Powered by NVIDIA® Jetson Orin™ NX Super
- 1U Height, 4K60 Transceiver
- Various I/O Daughter Board



Status

No.	Switch	Model Name	Description	Apply
1	<input checked="" type="checkbox"/>	OpenMediaFoundation	Jigjigame	<input type="button" value="E Stop"/>
2	<input checked="" type="checkbox"/>	Depth		<input type="button" value="E Stop"/>
3	<input checked="" type="checkbox"/>	FaceAttribute		<input type="button" value="E Stop"/>
4	<input checked="" type="checkbox"/>	Person		<input type="button" value="E Stop"/>
5	<input checked="" type="checkbox"/>	Face	Ve-Mobius	<input type="button" value="E Stop"/>
6	<input checked="" type="checkbox"/>	Licenseplate		<input type="button" value="E Stop"/>

AI Settings

No.	Alias	Type	Description	Position	Size	Color	Behaviors	Hot Key
1	RED	Text	Time Hybrid - NearPlus	10,50	64		AR+0	<input type="button" value="E Stop"/> <input type="button" value="Delete"/>
2	RED	Text	Time Hybrid - NearPlus	10,50	64		AR+1	<input type="button" value="E Stop"/> <input type="button" value="Delete"/>
3	RED	Text	Time Hybrid - NearPlus	10,50	64		AR+2	<input type="button" value="E Stop"/> <input type="button" value="Delete"/>
4	RED	Text	Time Hybrid - NearPlus	10,50	64		AR+3	<input type="button" value="E Stop"/> <input type="button" value="Delete"/>
5	RED	Text	Time Hybrid - NearPlus	10,50	64		AR+4	<input type="button" value="E Stop"/> <input type="button" value="Delete"/>
6	RED	Text	Time Hybrid - NearPlus	10,50	64		AR+5	<input type="button" value="E Stop"/> <input type="button" value="Delete"/>
7	RED	Text	Time Hybrid - NearPlus	10,50	64		OS+6	<input type="button" value="E Stop"/> <input type="button" value="Delete"/>
8	RED	Text	Time Hybrid - NearPlus	10,50	64		OS+7	<input type="button" value="E Stop"/> <input type="button" value="Delete"/>
9	RED	Text	Time Hybrid - NearPlus	10,50	64		AR+8	<input type="button" value="E Stop"/> <input type="button" value="Delete"/>
10	RED	Text	Time Hybrid - NearPlus	10,50	64		AR+9	<input type="button" value="E Stop"/> <input type="button" value="Delete"/>

OSD Settings

No.	Stream	Protocol	Description	Video Encoder	Audio Encoder	CPU / GPU	Apply
1	MAIN	RTSP	http://192.168.1.200:8080/rtsp/01.mpeg	h264	mp3	<input checked="" type="checkbox"/>	<input type="button" value="E Stop"/>
2	MAIN	RTSP	Group: 1920x1080, Main: 700	h264	mp3	<input checked="" type="checkbox"/>	<input type="button" value="E Stop"/>
3	Sub	RTSP	Group: 1920x1080, Main: 700, 1	h264	aac	<input checked="" type="checkbox"/>	<input type="button" value="E Stop"/>
4	Sub	TS	http://192.168.1.1000	h264	aac	<input checked="" type="checkbox"/>	<input type="button" value="E Stop"/>
5	MAIN	RTMP	rtmp://172.168.1.200:1935/rtsp/01.mpeg	h264	aac	<input checked="" type="checkbox"/>	<input type="button" value="E Stop"/>
6	Sub	RTSP	http://192.168.1.200:8080/rtsp/01.mpeg	h264	aac	<input checked="" type="checkbox"/>	<input type="button" value="E Stop"/>

Streaming Setting

AIR6N0-C NX TRX

CPU	NVIDIA® Jetson Orin™ NX 8GB Super 6-Core Arm® Cortex®-A78AE v8.2 64-Bit CPU 1.5MB L2 + 4MB L3	NVIDIA® Jetson Orin™ NX 16GB Super 6-Core Arm® Cortex®-A78AE v8.2 64-Bit CPU 6MB L2 + 4MB L3
GPU	1024-Core NVIDIA Ampere Architecture GPU with 32 Tensor Cores	
AI Performance	NVIDIA® Jetson Orin™ NX 8GB Super 117 TOPS	NVIDIA® Jetson Orin™ NX 16GB Super 157 TOPS
System Memory	NVIDIA® Jetson Orin™ NX 8GB Super 8GB LPDDR5	NVIDIA® Jetson Orin™ NX 16GB Super 16GB LPDDR4x
System Memory		
Storage	Supports External NVMe	
Display Interface	1×HDMI2.0 1×12G-SDI	
Ethernet	1×RJ45 for 10/100/1000Mbps Ethernet DHCP Client	
Expansion Slot	M.2 Jetson Orin™ NX 1×M.2 2280 M Key PCIe Gen4×1 Slot 1×M.2 2280 M Key PCIe Gen4×2 Slot	
USB	1×USB3.2 2×USB2.0	
Audio	1×3.5mm Line / MIC In 1×3.5mm Line Out / Headphone	
Peripheral Communication	18 Pin Header 4×GPIO 3×I2C 2×4 Pin Header 2×Tally 2×LED 8 Pin Phoenix Connector 1×RS232 1×RS485 1×GPIO	
Misc. Features	Firmware Upgradable	

Broad Product Line

web: www.yuan.com.tw
e-mail: sales@yuan.com.tw

